

# Futura

## Collection 2022-2025

Special Superdurable Finishes

**Interpon**<sup>®</sup>

POWDER COATINGS

■ Architectural



Your imagination starts with our finish

**AkzoNobel**

# Futura Collection

## 2022-2025

Interpon has a proud history of helping architects bring their creations to life through colors and finishes that will inspire and endure, to imagine a new and exciting future. The Futura Collection has been a favorite with architects for more than 20 years since the first collection appeared in 2000, although some of the colors date back even further to 1991. This neutral palette forms the backbone of the collection and is constantly updated by AkzoNobel's trend researchers and color specialists to make sure it is completely up to date with contemporary architectural design.

This history, as well as the forecasting by our market-leading design and research teams, has led to a new Futura Collection, providing modern buildings with a range of wonderful colors and beautiful finishes to deliver an aura of wonder and energy.

Because Futura is so much more than simply a collection of exciting colors. Futura is an emotion, a collection that inspires a feeling of tranquillity and peace, of thoughtfulness and healing, bringing balance to buildings and projects for years to come.

Through its three new color palettes - Merging Worlds, Healing Nature, and Soft Abstraction - Futura reminds us of our connection to the natural beauty that surrounds us, enveloping us in a warm and comforting blanket of calm, safe in the knowledge that our creations, and our world, are now better protected.

## Building a sustainable future

Futura Collection is not just helping to imagine the future, it is also protecting it. Backed by an Environmental Product Declaration (EPD), the Collection's raw materials, manufacture and transportation have been assessed by an independent third-party to confirm its sustainability credentials.



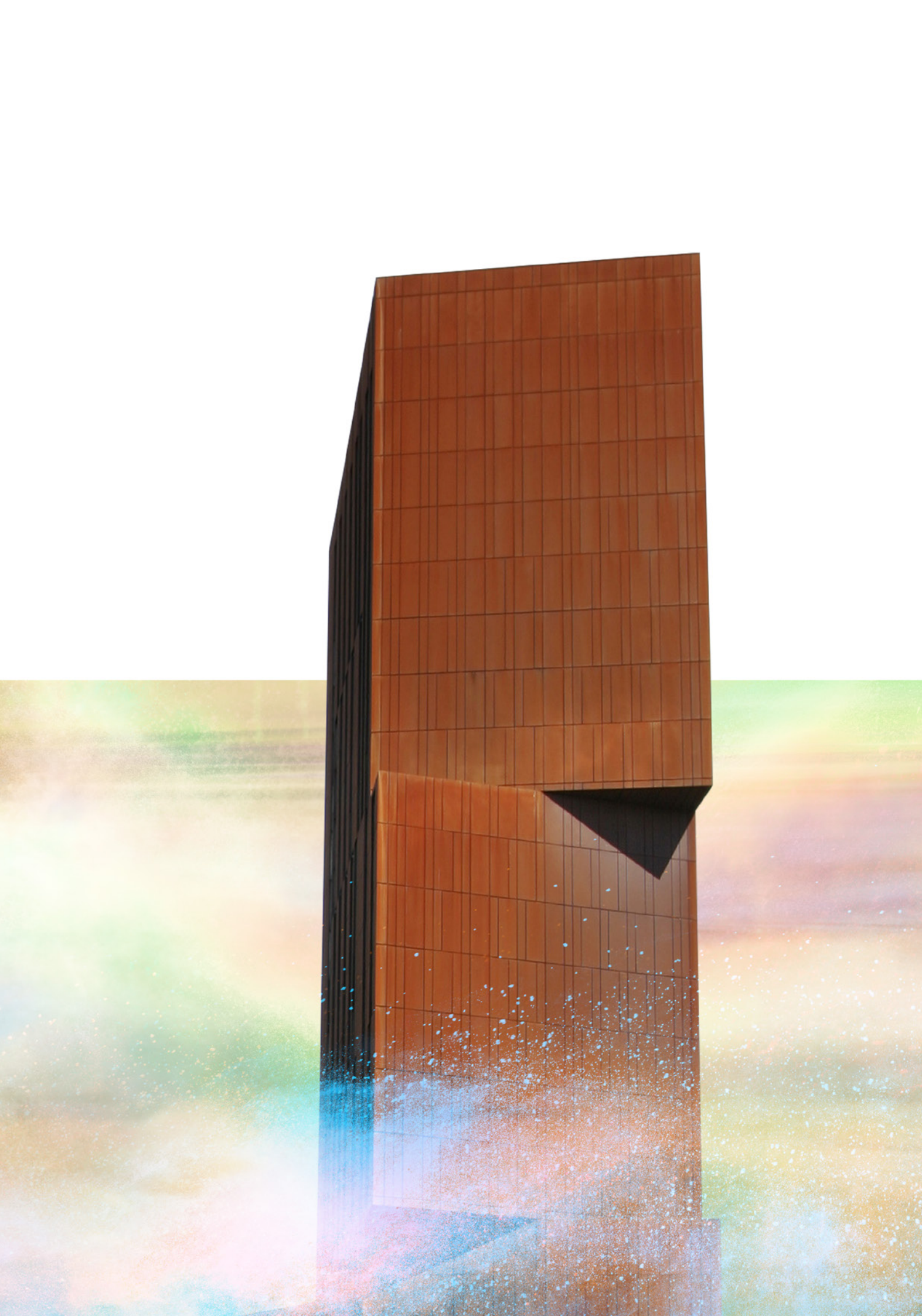
THE INTERNATIONAL EPD® SYSTEM

## Creating futures that last

The collection delivers exceptional superdurability to provide the highest levels of gloss retention, color stability and UV resistance to limit chalking. And with the backing of a 25-year warranty\* and Qualicoat Class 2, GSB Master certifications, Futura enables buildings to stand tall as symbols of our past, present and future.

\* Global 25 year warranty on the coating performance when applied by an Interpon D Approved Applicator.

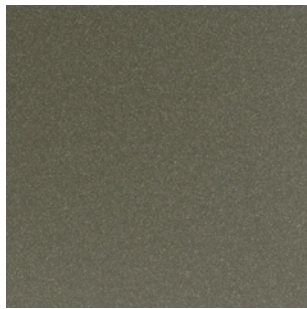




# Merging Worlds

To design the global buildings of the future, it helps to reflect on the beauty of the past. Using deep, crimson reds and subtle browns, the Merging Worlds palette elevates authentic materials like brick and natural wood to create a bold and powerful statement.

Building on warm, rich tones, Merging Worlds plays on the theme of traditional craftsmanship from across the globe, creating comforting finishes that capture the style past with a nod to the future.



**Bronze 2525**  
YW283F



**Sydney**  
Y220RI



**Tasilaq Sablé**  
Y2304I



**Tanami Sablé**  
Y4304I



**Mars 2525 Sablé**  
YX355F



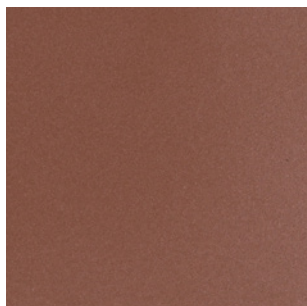
**Patah 2525**  
YW267I



**Gris 2800 Sablé**  
YW356F



**Arches**  
YW265F



**Cusco**  
Y221CI



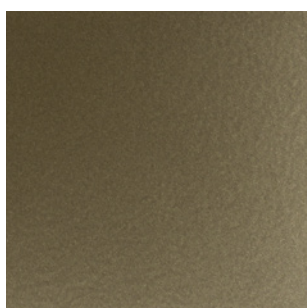
**Ambre 2525 Sablé**  
Y2316F



**Antu**  
Y2209I



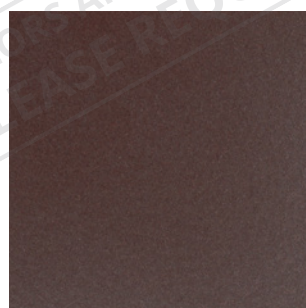
**Innoko Sablé**  
Y4306I



**Alby**  
Y2101I



**Lahore**  
Y2374I



**Pamplona**  
Y220NI



**Noir 2300 Sablé**  
YW383I



# Soft Abstraction

We all need time to sit back and think, to rest and reconsider, to contemplate and imagine a positive future. Driven by the power of contemplation, this trend covers a beautiful range of neutral, soft tone color shades and fine metallics that bring vitality and health to open spaces, laying the foundations for people to connect and recharge.

It's the chance to escape the everyday and move to a brighter world, with a more colorful sense of community and purpose.



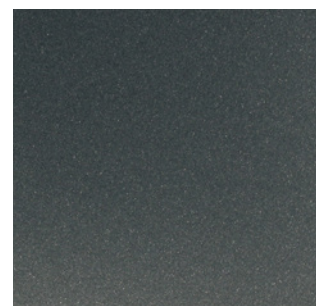
**Detendre**  
Y2214I



**Pyrite 2525**  
YW207F



**Gris 2150 Sablé**  
YW365F

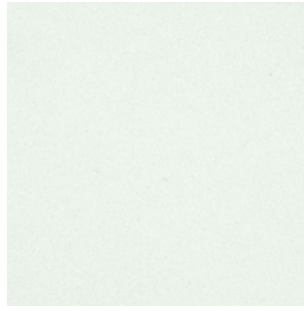


**Canon 2525**  
YW279F

**Interpon**<sup>®</sup>  
POWDER COATINGS



**Silver 2525**  
YW206F



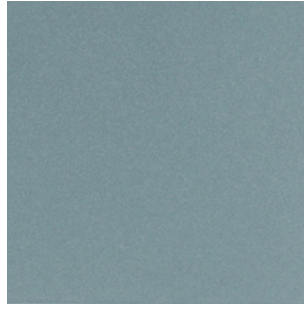
**Bodrum**  
Y2349F



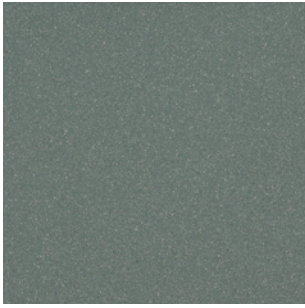
**Bleu 2700 Sablé**  
YW353F



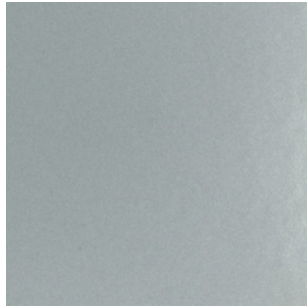
**Oia Silky Texture**  
YL316I



**Chicago**  
Y220SI



**Baku**  
Y2375I



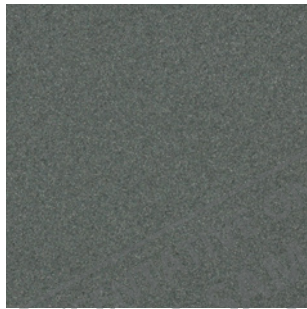
**Aurora**  
Y2000I



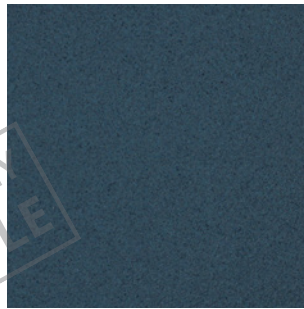
**Grazalema 2525**  
YW266F



**Djibouti Sablé**  
Y4307I



**Bleu 2600 Sablé**  
YW361F



**Brisbane Sablé**  
Y2303I



**Yazd 2525 Sablé**  
YW370F



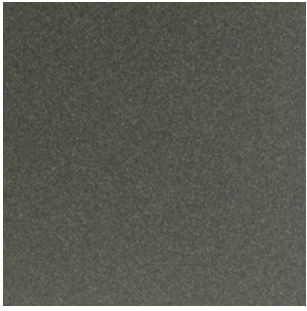
**Karako**  
Y2321I



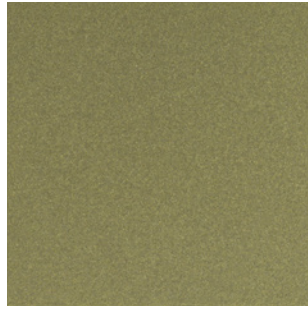
**Gris 2400 Sablé**  
YW373F



COLORS ARE REPRESENTATIVE ONLY  
PLEASE REQUEST A SAMPLE



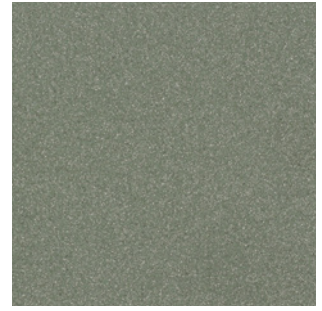
**Manganese 2525**  
YW280F



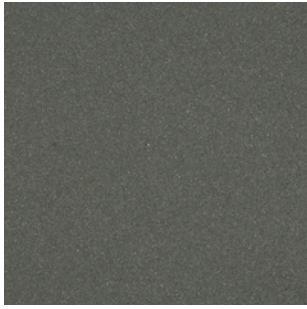
**Luxor**  
Y220TI



**Noir 2200 Sablé**  
YW360F



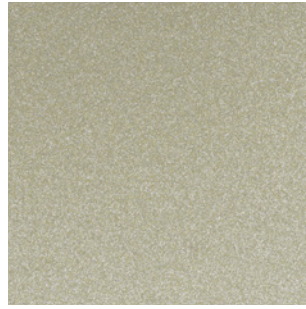
**Lichen**  
Y4326I



**Gris 2900 Sablé**  
YW355F



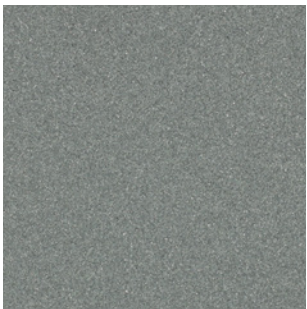
**Babua**  
Y221DI



**Sumela**  
Y2208I



**Tijuka Sablé**  
Y2306I



**Starlight 2525 Sablé**  
YX353F



**Gris 2500 Sablé**  
YW358F



**Changi**  
Y2373I



**Samoa**  
Y220UI



**Noir 2100 Sablé**  
YW359F



**Brun 2650 Sablé**  
YW366F



**Pachuca**  
Y220PI



**Galet 2525**  
YX050F

COLOURS ARE REPRESENTATIVE ONLY  
PLEASE REQUEST A SAMPLE

Colors are representative only, please request a sample.

# Healing Nature

With a renewed focus on health and wellbeing, Healing Nature provides the chance to reconnect with the world and find the balance to contrast our busy lives.

The trend showcases a range of natural shades – greens and earthy tones, organic shapes and unrefined patterns – that provide a grounding quality to bring us, and our architectural designs, closer to the surrounding environment bringing a sense of tranquillity and calm.



Location: Secondary School Gragnague, France | Achitect: Groupe Nissou @ Olivier Accart | Product: Bodrum Y2349F

## AkzoNobel

We've been pioneering a world of possibilities to bring surfaces to life for well over 200 years. As experts in making coatings, there's a good chance you're only ever a few meters away from one of our products. Our world class portfolio of brands – including Dulux, International, Sikkens and Interpon – is trusted by customers around the globe. We're active in more than 150 countries and have set our sights on becoming the global industry leader. It's what you'd expect from the most sustainable paints company, which has been inventing the future for more than two centuries.

For more information please visit [www.akzonobel.com](http://www.akzonobel.com) and [www.interpon.com](http://www.interpon.com)

All products supplied & technical advice given are subject to the standard terms of sale of the AkzoNobel supplying company. Copyright ©2021 Akzo Nobel Powder Coatings Ltd. Interpon is a registered trademark of AkzoNobel.

Issue 1 - 07/2021.

### Follow us

Powder Coatings by AkzoNobel



[architectural.interpon.com](http://architectural.interpon.com)

Speak to your local representative or contact [interpon.info@akzonobel.com](mailto:interpon.info@akzonobel.com) to order samples and learn more about what Futura Collection can do for you.



**Interpon Design App**  
Created especially for architects and specifiers



### Environmental Production Declaration

An EPD® is a certified Eco-footprint; our commitment to sustainability.



BIM objects in different languages available on: [bimobjects.com/en/interpon-emea](http://bimobjects.com/en/interpon-emea)

# Interpon®

 **Architectural**

Your imagination starts with our finish